

- Regional Roundtables
- Product Highlight



- Application Story Highlight
- NitWit Overview

714-550-7211

www.rpvisuals.com

Feb 13, 2007

rp Visual Solutions' NitWit *Sort of* Monthly

REGIONAL ROUNDTABLES

See rp Visual Solutions this Friday in Atlanta at the InfoComm Regional Roundtable.

- [Atlanta, Georgia: February 15, 2007](#)

Free to InfoComm members, the Regional Roundtables are designed to bring AV professionals together to learn more about the industry, while facilitating peer networking and obtaining feedback on ways InfoComm can better serve the industry.

- [Click here for the future Regional Roundtables](#)

Toronto • San Francisco • Seattle • Washington, DC

PRODUCT HIGHLIGHT

rp Frames



rp Frame 3
Self Finishing J Frame
[Click for brochure](#)

rp Frame 3
Self Finishing J
Allow suspending of

[Click for brochure](#)



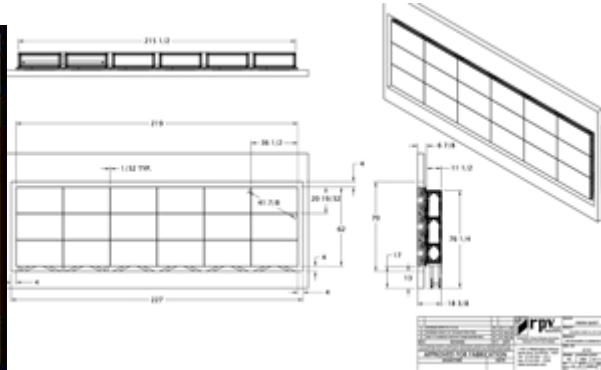
with pins
Frame screen hanging
screen to minimize deflection/bow



rp Frame 4
(Heavy Weight) Frame
New lower profile design

[Click for brochure](#)

APPLICATION STORY HIGHLIGHT



The Donor Wall at Children's Hospital of Atlanta has rp Visual Solutions' rppm Panel Mount Structure. This mount is a 100% Custom Stand to interface and supports 3 high x 6 wide 42" PDP Flat Panels (18 Units total).
System Integration by Vision Quest.

[Click here for additional rp Visual Solutions Application Stories](#)

NitWit Seminars

We had a total of four NitWit Seminars--3 in December & 1 in January
We couldn't have done these without the support of ACP, Christie, DNP, Extron, & Vista Systems.

We will be informing you of the next scheduled series.

THANK YOU

ACP

 **Extron.**

VISTA
SYSTEMS

CHRISTIE



NitWit comes from the words Nit & Wit. Nit is a measurement of light, and Wit is quick knowledge. Therefore, this newsletter is for Bright and Sharp AV Souls.

Please let us know how we can be of assistance in designing your next display mount project.
Our Room Plan Worksheet is available as a PDF or Interactive Online.
[Room Plan Worksheet](#) [rp Visual Solution's Line Card](#) info@rpvisuals.com

Innovative Visual Displays Tailored To Fit Your Needs

PH 714-550-7211

1102 E. Washington Avenue, Santa Ana, CA 92701
714-550-7230

FX

This message was sent from rp Visual Solutions to ginger@rpvisuals.com. It was sent from: RP Visual Solutions, 1102 E. Washington Avenue, Santa Ana, CA 92701. You can modify/update your subscription via the link below.

[Manage your subscription](#)