

rp Visual Solutions' NitWit* *Sort of Monthly*

- Sapphire Marketing
- Application Story
- Michael Lu now VP of Sales
- Control Room Brochure
- Savings for You
- Educational Opportunities



714-550-7211

www.rpvisuals.com

February 7, 2008

Innovative Visual Display Solutions Tailored To Fit Your Needs

SAPPHIRE MARKETING



rp Visual Solutions (rpvs) has chosen Sapphire Marketing to handle its product line. This is the first time that rpvs has chosen a Rep Company to sell our product line. Marla and Company will be representing the rp Visual Solutions product line for the following states: Connecticut- Maine- Massachusetts- New Hampshire- New Jersey- New York- Rhode Island- Vermont- Eastern PA.

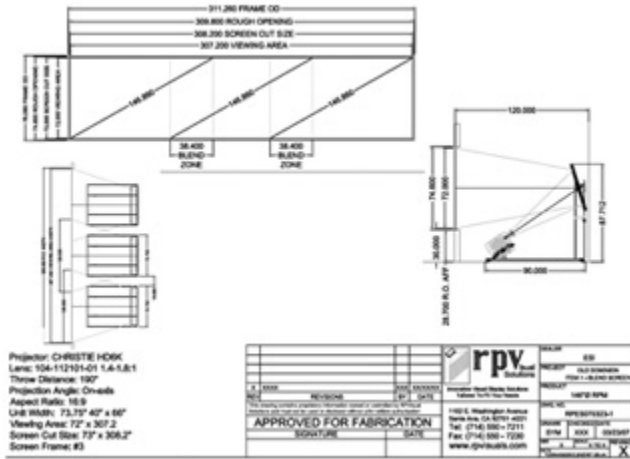
www.sapphiremarketing.com

APPLICATION STORY HIGHLIGHT

The Recipe for the Perfect Blend

Contact us for your application

Click on Pictures for larger images



Old Dominion University achieved a 1x3 blend wall. Three 146" images were blended together via three rp Visual rpm Rear Projection Mounts, creating an overall image size of 6' x 26'.

System Integration by Integrated Electronic Systems, Inc., in Virginia Beach , VA.

[rpw Rear Projection Wall Brochure](#)

[Click here for additional rp Visual Solutions' Application Stories](#)

MICHAEL LU IS VICE PRESIDENT OF SALES

AV industry professional and rear projection specialist, Michael Lu, joins rp Visual Solutions as Vice President of Sales, overseeing the US and International markets. Michael has over 25 years of sales experience and came into the AV industry 10 years ago.

[Michael's Press Release](#)



NEW CONTROL ROOM BROCHURE



See our first application brochure highlighting Control Rooms. This brochure shows rpw Rear Projection Walls using cubes, projector engines, and flat panels for Automation, Control, and Utilities.

If using cubes our rpp Pedestals are after market Pedestals where you choice the size, cladding, sill height, rack rails, and front decor.

If using flat panels then we offer our rppm rp Panel Mounts to hold your Plasma or LCD panel in a curved or straight array--concave or convex.

If using projector engines then our rpw Rear Projection Walls allow you to select screen material, screen size, cladding options and rack rail options.

[Click here for Control Room Brochure](#)

SAVINGS FOR YOU



Get our DEMOGEAR at a fraction of the price - We've done the work and you can reap the benefits. We are offering two 100" , 4:3, dnp New Wide Angle screens in enclosures, one 90" dnp NWA screen 16:9, and one 67" plotVizable with the dnp Black Bead screen at prices below our cost.

[See brochure for more info.](#)

EDUCATIONAL OPPORTUNITIES

[Click on map for larger image](#)

rp VISUAL SOLUTIONS TO HOST INFOCOMM CLASSES

rp Visual Solutions will be hosting AV CareerCorps & Install Courses in our facility.

AV CareerCorps

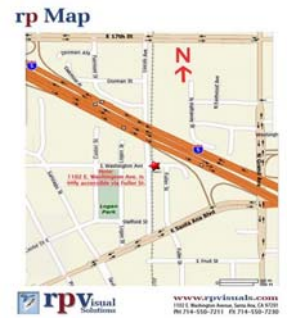
If you are looking to hire entry-level personnel, then presented by InfoComm can help. Classroom courses will be taught February 16-18. Interviews will be held the morning of February 19.

Read all about it here: www.LearnAV.org

Install Courses

Install 1 Feb 20 -22. Install 2 Feb 23 - 25.

[Read all about it](#)



ISF COMMERCIAL CLASS

ISF Class to be held Carlsbad, CA, on February 14 & 15. Mention rp Visual Solutions, and you will receive \$100.00 discount.

For mor information: www.isfcommercial.com

****NitWit comes from the words Nit & Wit. Nit is a measurement of light, and Wit is quick knowledge.***

Therefore, this newsletter is for Bright and Sharp AV Souls.

Please let us know how we can be of assistance in designing your next display mount project.

Our Room Plan Worksheet is available as a PDF or Interactive Online.

[Room Plan Worksheet](#)

[rp Visual Solution's Line Card](#)

info@rpvisuals.com

www.rpvisuals.com