

rp Visual Solutions' NitWit* Sort of Monthly

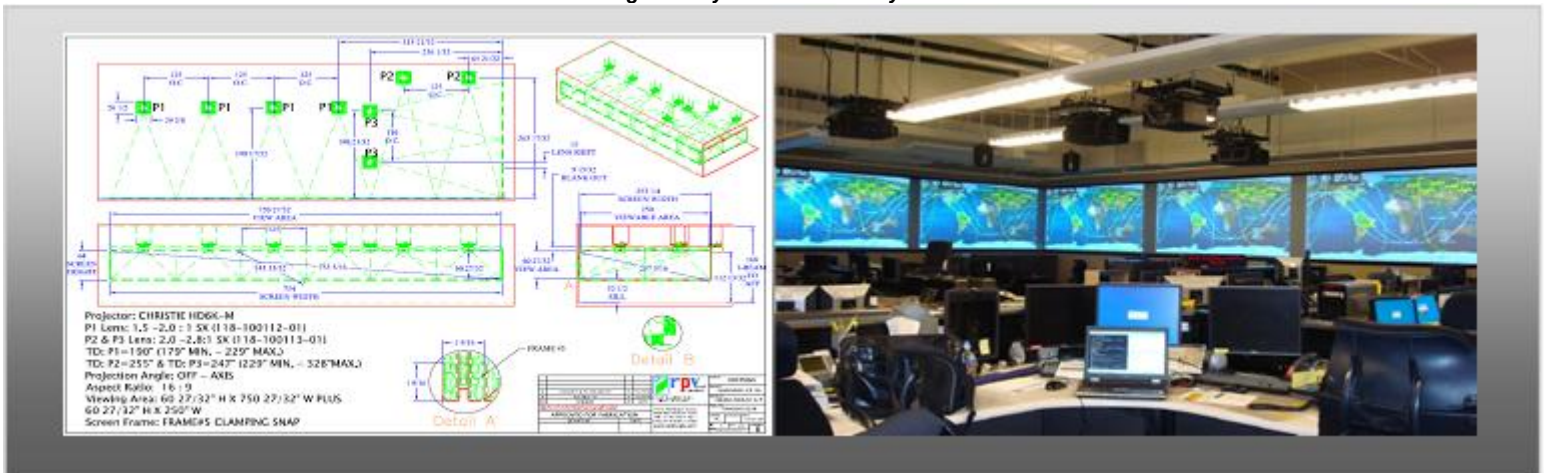
Innovative Visual Display Solutions Tailored To Fit Your Needs

April, 9, 2009

When all projectors start performing the same.....
OPTICAL Screen Technology Makes the Difference

DNP Supernova Optical Screen—Front Projection Tiling wall—60" x 1000" image

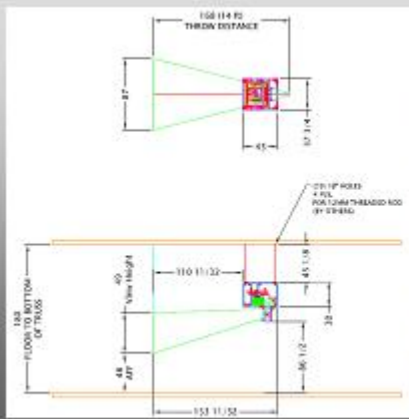
*Eleven Supernova Infinity Screens installed side-by-side to create this 83' long Video Wall
Integration by Hoffman Video Systems*



Brochure

DNP Supernova Optical Screen Flex 100" Screen—Front Projection

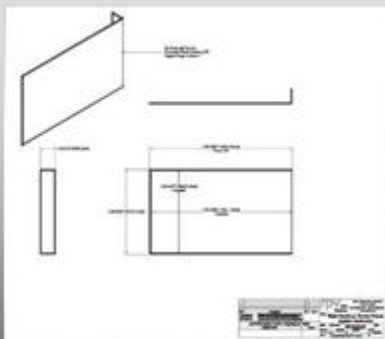
*Periscope Mount for Front Projection onto Supernova Flex Screen
Rp Visual Solutions '08 InfoComm Booth*



Brochure

Diffusion Front Screen
ACP UltraFlex Diffusion Rear Projection Screen

3/16" thick screen can be used for front or rear projection. Screen bent 90° to wrap around corner
Integration by Applied Electronics Limited



Brochure

Take Control of Command and Control Rooms
Thursday, 6/18/2009 08:00 AM - 10:00 AM
Adjunct Faculty Member, Randy Pagnan, Teaches Course at InfoComm



Visit Us at Booth #4901

EXPERIENCE THE POWER OF AV

rp Visual Solutions

infoComm09
INFORMATION COMMUNICATIONS MARKETPLACE
June 17-19
Orange County Convention Center
Orlando, FL USA

**NitWit comes from the words Nit & Wit. Nit is a measurement of light, and Wit is quick knowledge. Therefore, this newsletter is for Bright and Sharp AV souls.*

Please let us know how we can be of assistance in designing your next display mount project. Our Room Plan Worksheet is available as a PDF or Interactive Online.

[Room Plan Worksheet](#)

[rp Visual Solution's Line Card](#)

info@rpvisuals.com

www.rpvisuals.com 714-550-7211