



Innovative Visual Displays Tailored To Fit Your Needs



rpw Wall Rear Projection Wall  
Display / Video Wall

**PRODUCT SPECIFICATION**

Quote: XXX-RPWMMDDYY-X

CAD: RPXXXXXXXX

**Item Description**

RPW-DIF/OPT-XXX- FRC

RPW – Free Standing Rear Projection Wall

DIF/OPT – Diffusion or Optical Screen Choice

XXX – Screen Size Diagonal Image

FRC – rp Frame Can Assembly



**Description:**

The *rp Visual Solutions' rpw Wall Rear Projection Display* is a Free Standing Rear Projection Wall designed with minimal depth and arranged in a curved or straight array. This Single or Double Mirror Bounce *rpw Wall* is comprised of 45mm x 45mm Bosch Based Aluminum Extrusion using a 6-Axis alignment projector cradles which allows for the Forward/Back, Left/Right, Elevation, Tilt, Pan & Yaw. The *rpw Wall* has leveling feet with +/- 2" Adjustment. The mirror management system uses 94% Reflective First Surface Glass Mirrors. The screen will be either ACP diffusion or DNP optical in aspect ratio of 4:3, 5:4, or 16:9.

Also included are the latching front doors for service access. Optional Cladding is MDF (Multi-density Fiberboard) in choice of colors or wood laminate. Additionally, rack rails or camera cutouts can be added.

**Guidelines:**

- The *rpw Wall* Frame Structure shall be manufactured by rp Visual Solutions. The *rpw Wall* shall be a 100% custom design, freestanding apparatus, fully supported from the ground up according to the custom designed specifications.
- The **RPW-DIF/OPT-XXX-FRC** will be a \_\_\_high x \_\_\_ wide wall with \_\_\_ screens each at \_\_\_" Diagonal in a \_\_\_\_:\_\_\_\_ aspect ratio image. All dimensions are outlined in our "First-off" Feasibility CAD.
- This unit, as quoted, shall be of an open frame design with optional cladding for the front.
- The projector mount platform and shall be integrated with \_\_\_\_\_ projector which will incorporate rp Visual Solutions' 6-Axis Image Adjustment System to allow for precise image adjustments and serviceability.
- The image lock-in system ensures precise image platform alignment, which will also be maintained over time.
- Optimized light path trajectory delivers maximum brightness to the viewer/operator.





## Innovative Visual Displays Tailored To Fit Your Needs

### Design & Documentation:

- High quality, detailed CAD drawings generated for pre-construction approval.
- Drawings are catalogued by serial number for each unit to allow low-cost refurbishment, upgrades or re-fit.
- Detailed, easy-to-follow assembly instructions included with each unit.
- Future projector model/lens requirements option can be selected & built-in to design considerations.

### Screen & Frame:

- rp Frame Can Screen Assembly minimizes image gaps between screens to less than 1.5mm (for this project). It shall be constructed of ruggedized sheet metal.
- Each Screen will be either ACP diffusion or DNP optical in aspect ratio of 4:3, 5:4, or 16:9.



### UV Bonding:

- UV Curing process to adhere 2 screen pieces of substrate together. This is achieved using Dymax Light Curing System.



### Construction:

- Self supporting structure based composed of 45mm x 45mm Bosch Based Aluminum Extrusion.
- EZ-Level feet for precise screen alignment in multi-array applications can be easily and conveniently fastened to the facility to comply with any local structural attachment requirements.



- Single or Multi-point FSG (First Surface Mirror) Assembly.
- "Fixbloc & T-bolt" assembling joinery without welded components for ease of installation.
- Laminate MDF cladding in color choices or optional wood veneer choices.



- No special tools required to assemble.



### Ventilation:

- Designed with open construction to allow maximum air circulation and cabling direct to floor.
- Adequate ventilation shall be provided to ensure proper ambient temperature control within the *rpw Wall*.
- Convection cooling system to allow projection units to cool properly

### Projector & Cable Access:

- Optional cable management system available.
- Optional removable latch-panels for projector installation/service/rack access.



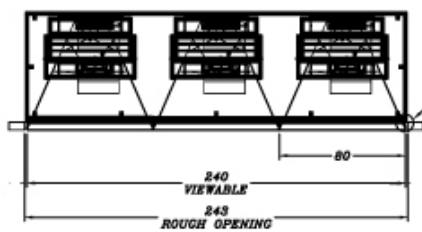


**Innovative Visual Displays Tailored To Fit Your Needs**

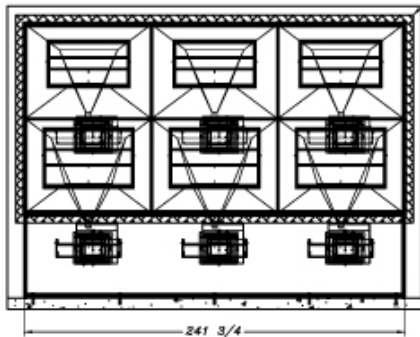
**Factory Testing & Warranty:**

- Each *rpw Wall* unit is factory tested with a minimum of 2 screens illuminated and with two modules populated (4 projectors total) with the exact projectors specified. This test will ensure continuity of all seams over the entire wall structure.
- We conduct a documented “Satisfactory Performance” at our factory before any *rpw Wall* unit is approved for shipment. We invite you to attend in-person or via video-conference so we can show you first-hand how exacting our standards for quality are!
- The rp Visual Solutions’ *rpw Wall Rear Projection Display* Factory Warranty covers all parts and labor for one full year from Invoice date in mechanical structure.

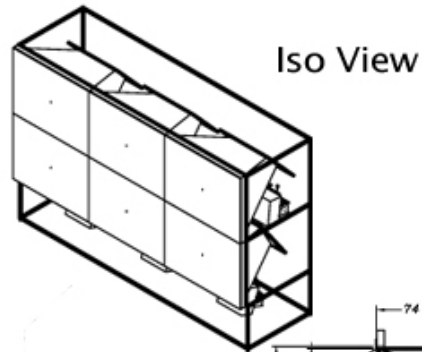
**2 x 3 rpw Wall Example  
(2 100” Screens High x 3 Wide)**



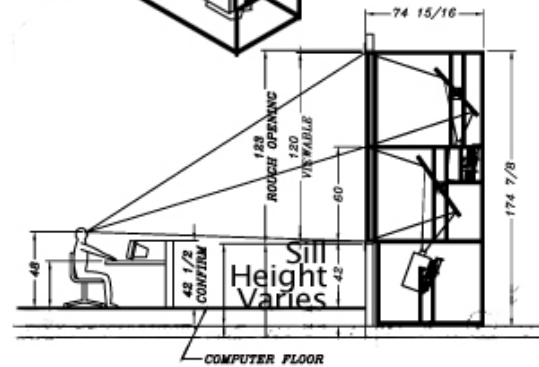
Top View



Front View



Iso View



Elevation View

Rev 0.2